

Mar Cor Purification
BIOPURE® LSX HIGH EFFICIENCY WATER SYSTEM

Water is Expensive.
Why Waste it?



Superior Technology. Economical Price.



NEXT GENERATION OF USP WATER GENERATION

BIOPURE® LSX USP PURIFIED WATER SYSTEM

The BIOPURE LSX is the first USP water system specifically designed to minimize energy consumption and reduce the amount of water used throughout the purified water production process.

The BIOPURE LSX High Efficiency USP Water System is a compact single pass, hot water sanitizable RO-EDI system designed to produce USP purified water and meet all the critical quality standards expected of the Pharmaceutical industry. The system is available in flow rates ranging from 2.5 to 40 gallons per minute.

BIOPURE LSX is the logical choice for a pharmaceutical research and manufacturing USP water system.

BIOPURE LSX
INTRODUCTION
VIDEO



VISIT WWW.MCPUR.COM

One Water System Checks All The Boxes



- SUPERIOR DESIGN
- SERVICE NETWORK
- VALUE DESIGNED & PRICED
- ENERGY & COST SAVINGS
- EASE OF VALIDATION
- QUICK LEAD & INSTALL TIME

Specifically Designed to Reduce Ongoing Utility Costs

The BIOPURE® LSX USP Purified Water System for Pharmaceutical applications combines all the necessary features and components required to expertly deliver and maintain validated USP pharmaceutical grade water. This combination of features have lead over 30 biopharmaceutical companies to choose the BIOPURE LSX for the generation and delivery of the USP water used to manufacture their critical components and products.

UNIQUE DESIGN OFFERS UNRIVALED GROUP OF FEATURES



Automated self-adjusting modulating valves to control reject.



User friendly 10" color HMI interface for full system control.



VFD Distribution Pumps reduce energy consumption.



Fully integrated Heat Disinfection technology.

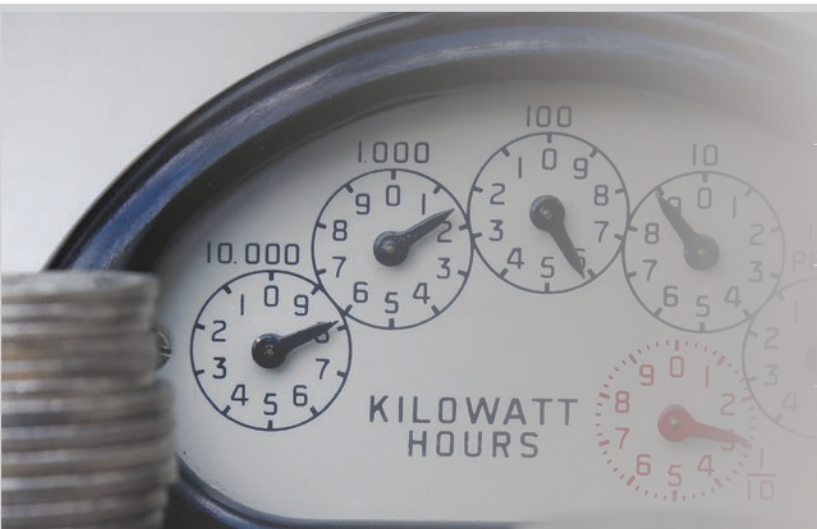


Ethernet and USB connections allow for full connectivity.



High Recovery Standby Mode deliver up to 95% recovery.

Up to 95% Water Recovery. Minimized Energy Consumption.



STANDARD WATER/ENERGY SAVING TECHNOLOGIES

Variable Frequency Drive Distribution Pumps

These durable stainless steel pumps automatically adjust frequencies based on water flow to reduce electrical consumption

Self Adjusting Reject Flows

Fully automated self-adjusting modulating valves control reject and deliver water savings of up to 50% over a traditional system

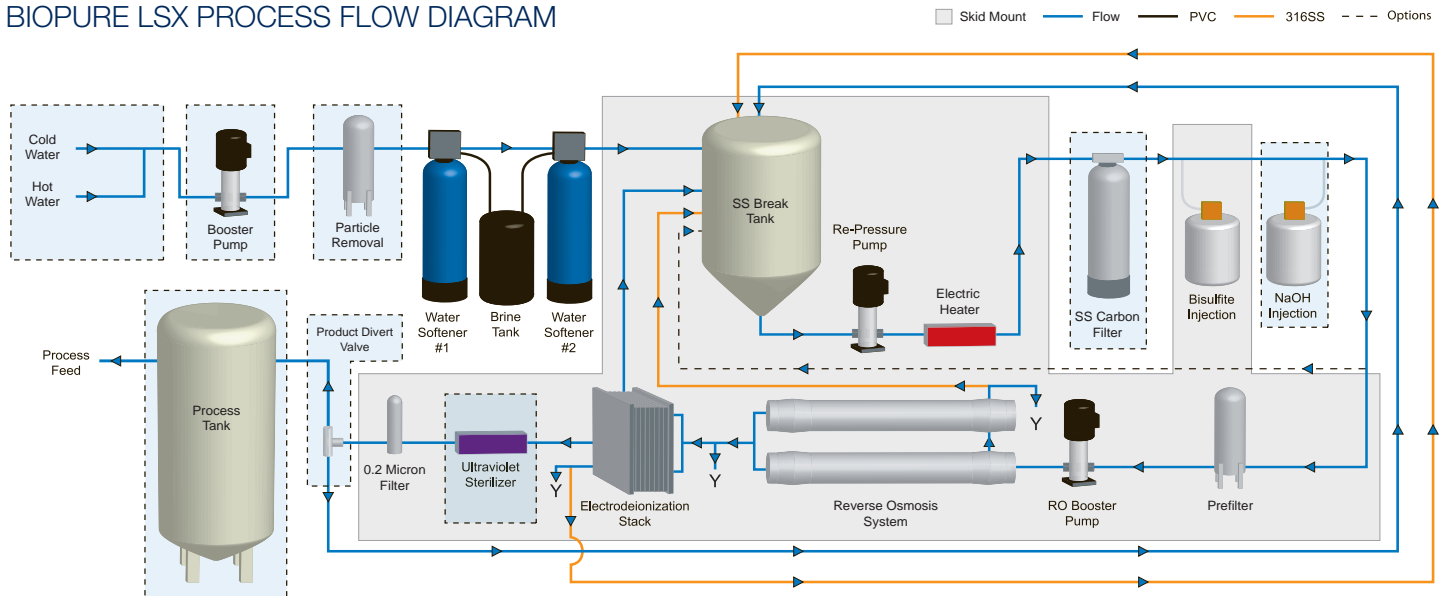
High Recovery Standby Mode

High Recovery Mode allows the system to recover as much as 95% reject water with in standby mode

WHY WASTE IT?

The BIOPURE® LSX USP Purified Water System for Pharmaceutical applications features a High Recovery Operating Mode that automatically adjusts the system for optimal production flow rate while recovering up to 95% of the feed water. This standard feature can save the user tens of thousands of gallons of water and reduce discharge of waste to drain.

BIOPURE LSX PROCESS FLOW DIAGRAM



BIOPURE® is a registered trademark of Mar Cor Purification Inc., A Cantel Medical Company.



Mar Cor Purification
4450 Township Line Road
Skippack, PA 19474-1429
Tel: (484) 991-0220
Toll Free: (800) 346-0365
Fax: (484) 991-0230

Mar Cor Purification
14550 28th Avenue North
Plymouth, MN 55447
Tel: (484) 991-0220
Toll Free: (800) 633-3080
Fax: (763) 210-3868

Mar Cor Purification
Sourethweg 11
6422 PC Heerlen
The Netherlands
Tel: (+31) 45 5471 471
Fax: (+31) 45 5429 695

Mar Cor Purification
1A International
Business Park, #05-01
Singapore 609933
Tel: (+65) 6227 9698
Fax: (+65) 6225 6848

Manufactured by:
Biolab Equipment Ltd. o/a
Mar Cor Purification
3250 Harvester Road - Unit 6
Burlington, ON L7N 3W9
Canada
Tel: (905) 639-7025
Toll Free: (800) 268-5035
Fax: (905) 639-0425