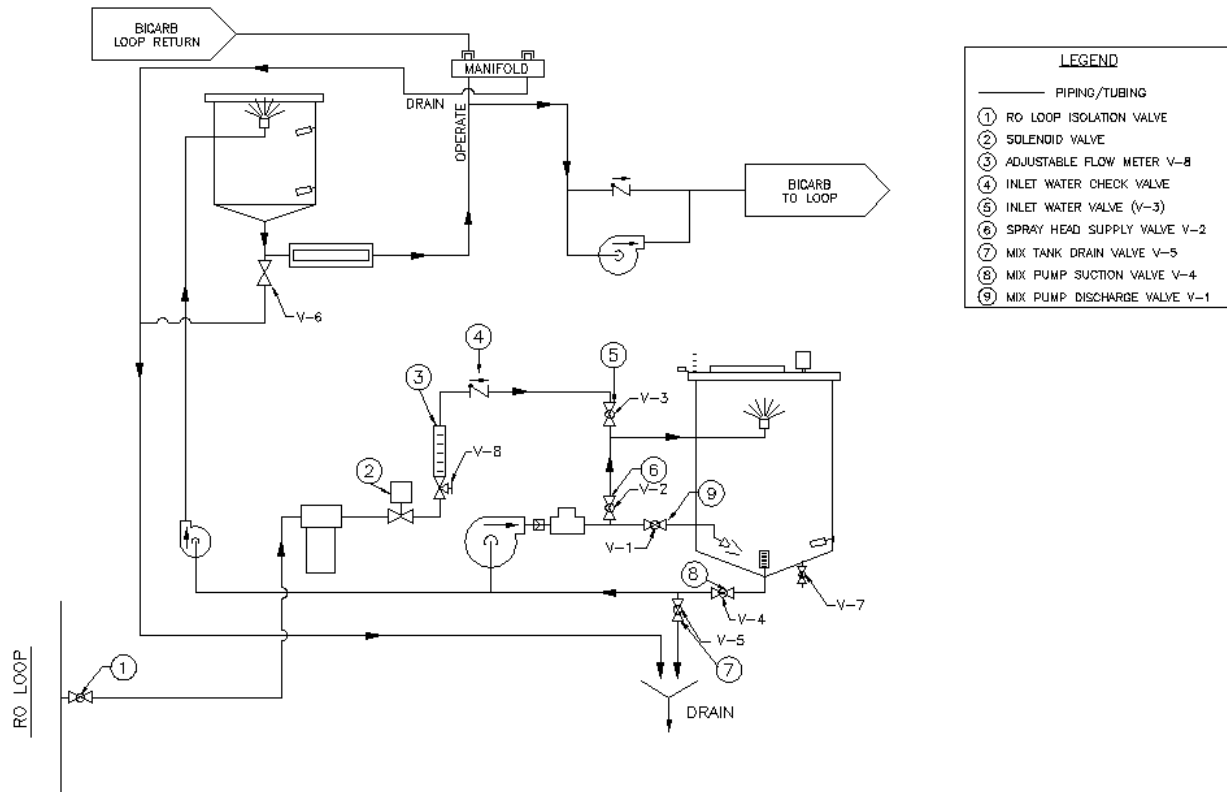


PSDS CHECK VALVE REPLACEMENT

CONTENTS

Item	P/N	Description	QTY
1	W3T578980	ASSY,PSDS,CHECK VALVE REPLACEMENT	1



PROCEDURE

1. Turn the Power Switch on the PSDS to the OFF position.
2. Close the RO Loop Isolation Valve and the Inlet Water Valve (V-3).

NOTE: To replace just the check valve only:

- a. Disconnect the tubing from the check valve hose barb.
- b. Remove the check valve from the threaded fitting on the elbow.
- c. Install the new check valve with the same flow orientation onto the threaded elbow fitting.
- d. Reconnect the tubing onto the check valve hose barb fitting. Go to Step #6.

3. Remove the union half located inside the PSDS frame that connects to the top of the flow meter.



4. Remove the union from the top of Inlet Water Valve (V-3). Discard the removed hose assembly.



5. Install the new hose assembly between the union located at the top of the flow meter and V-3.
6. Open the RO Loop Isolation Valve and the Inlet Water Valve (V-3).
7. Turn ON the PSDS.
8. Close the Mix Pump Discharge Valve (V-1) and the Mix Tank Spray Head Supply Valve (V-2).
9. Turn the Mix Tank Auto Fill Switch to START. Inspect for leaks from the newly installed hose assembly or replaced check valve. Once confirmed to be leak free, turn the Mix Tank Auto Fill Switch to START.
10. Perform a PSDS disinfect.