

MILLENIUM HX® WATER PURIFICATION SYSTEM SOLENOID VALVE 4 SPRING REPLACEMENT INSTRUCTIONS

This Tech Note applies to the following serial numbers: 1330349-Present.

Materials Required:

W3T577715 KIT,MHX,SV4 SPRING REPLACEMENT

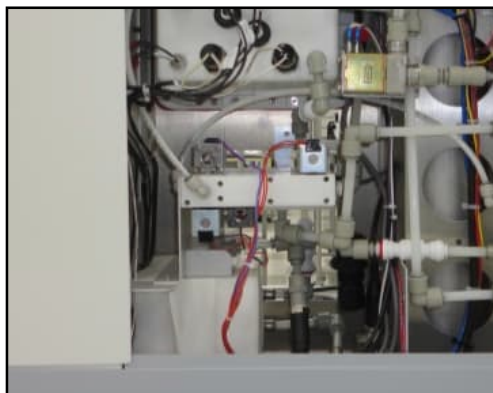
NOTE: Additional screws provided in kit are intended as spares and do not require replacement

Tools Required:

#1 Phillips Head Screwdriver

Instructions:

1. Power off the machine, unplug the machine's power cord, and remove the feed water connection.
2. Remove the left and right side panels from the machine.

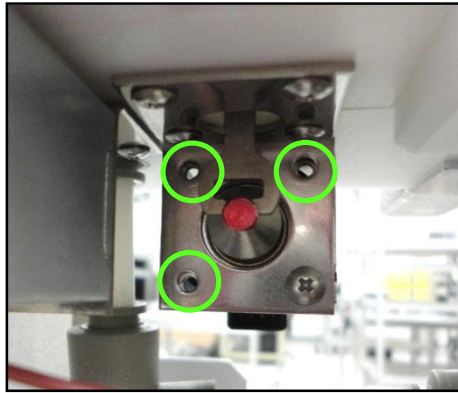


3. Remove the electrical connection to the SV4 Solenoid (SV4 is the solenoid with the red mark on the end of the plunger).

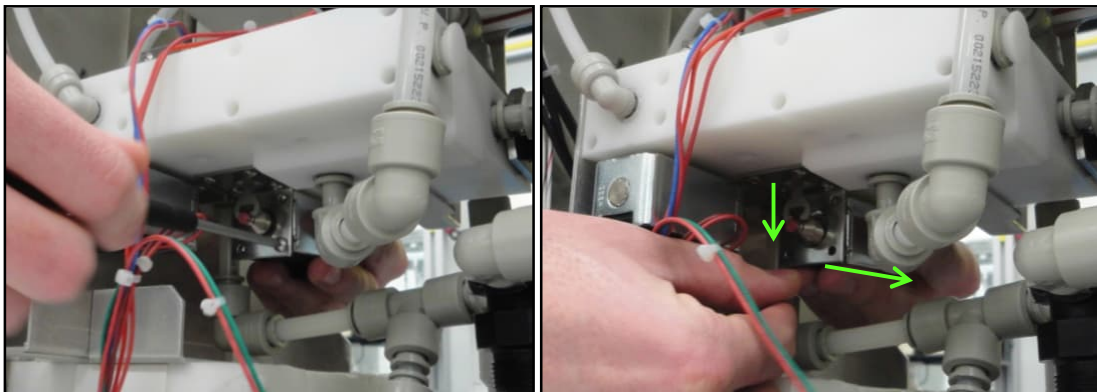


Millenium HX is a trademark of Evoqua Water Technologies LLC, it's subsidiaries and affiliates in some countries.

4. Remove the three screws shown below securing the Solenoid to the bracket.



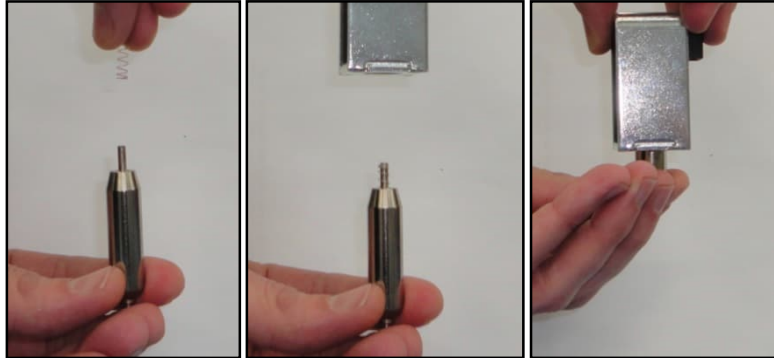
5. While holding the solenoid from the backside, remove the final screw. After the screw is removed, tilt the solenoid to free it from the rocker arm and pull the entire assembly out from the bracket. Plunger may fall out, take care not to lose plunger and spring.



6. Remove the plunger from the solenoid and discard the existing spring.



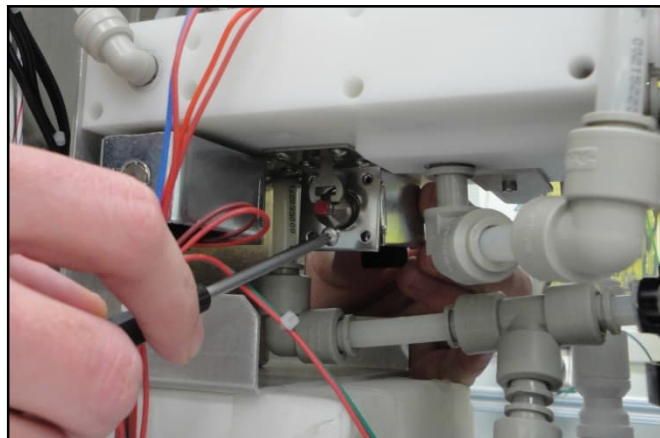
7. Place the new spring on the plunger (spring on top) and place the solenoid over the plunger. Note: the solenoid must be placed on top of the plunger to ensure that the spring does not become dislodged.



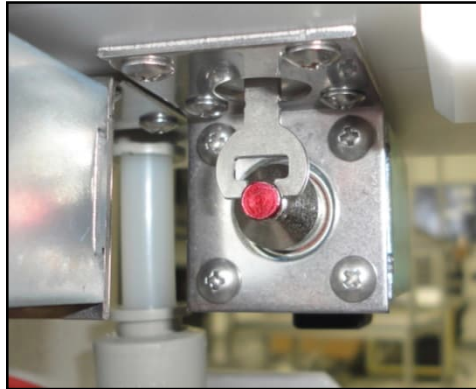
8. Place a screw on the screwdriver to be ready for re-installation in the next step. NOTE: The screw is non-magnetic and may fall off worn screwdrivers.



9. Keeping the solenoid tilted plunger side up; insert the solenoid back through the bracket and install one of the bottom screws (do not fully tighten).



- Position the plunger groove with the slot in the rocker arm and install the remaining three screws.



- Re-insert the electrical connection to solenoid.



- Plug in the machine's power cord, power on the machine, enter "Test Mode" via settings (Password: 555), and proceed to Test Screen 2. Activate SV4 by pressing the "O:4/SV4" button in Column 2. While activating the SV4 output, observe function of the valve (when the button is pressed the plunger should be pulled into the solenoid, when the button is released, the plunger should be pushed out of the solenoid). If the valve is not operating verify that the plunger is seated correctly with the rocker arm, check the electrical connection, and recheck operation.
- After proper function of SV4 has been verified, re-install the side panels and re-connect the feed water connection. Place the machine into "RUN" mode for at least fifteen minutes to verify operation of the machine.