

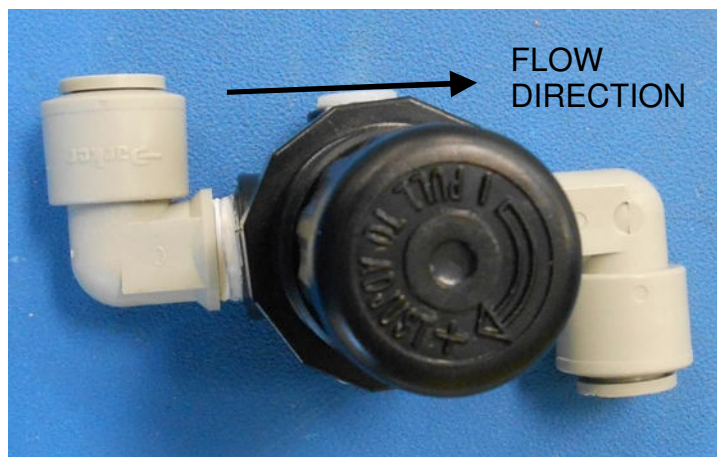
MILLENIUM HX® WATER PURIFICATION SYSTEM PRESSURE REGULATOR ADJUSTMENT

The Millennium HX (MHX) contains a regulator which can be used to adjust the incoming feed pressure to allow for proper machine operation. An improperly set regulator can lead to high amounts of concentrate recovery (too low of a setting) or could prevent solenoid valve operation (too high of a setting). The regulator is set at the factory and should not require any adjustment. However, should the regulator need to be replaced or adjusted, please follow the procedure below.

NOTE: To properly set the pressure regulator the machine must be connected to a feed water supply that has a static pressure of at least 55 PSI.

NOTE: If installing a new regulator (P/N W2T915634), begin at step 1. If adjusting an existing regulator that is currently installed in a machine, jump to step 4.

1. Install elbows (P/N W2T912835) to regulator in the orientation as shown below. Be sure to install the plugs in side ports with PTFE tape and silicone.

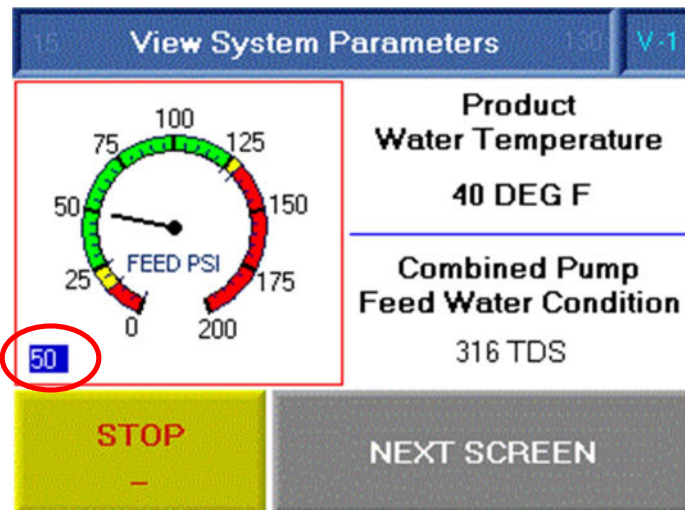


2. Pull out on regulator knob to unlock the regulator to allow adjustments. Close the regulator by spinning the adjustment knob counterclockwise until the knob stops. Then open the regulator up by turning the knob two full turns in the opposite direction (clockwise).

3. Install the regulator assembly into the machine. Make note of the flow direction molded on the regulator body. The flow arrow should be pointing away from the feed check valve and should follow the flow of feed water into the machine.



4. Place the MHX into "RUN" mode.
5. Select "VIEW" to see "VIEW SCREEN 1."
6. Observe the FEED PSI (circled in the image below). When the background turns blue, it is an indication that the machine is in Tank feed mode.



7. Adjust the regulator targeting 48-52 PSI when the machine is in Tank feed mode (Feed PSI reading has blue background). Push in on the regulator knob to lock in the position.
8. The pressure should stabilize while the machine is in Tank feed and drop as the machine switches to City feed. If the pressure continues to rise while the machine is in Tank feed, verify proper flow direction of the regulator. If the regulator is oriented correctly and the pressure continues to rise, it should be replaced.
9. Re-install all panels, the Millenium HX is now ready for use.

Millenium HX is a trademark of Evoqua Water Technologies LLC, its subsidiaries or affiliates in some countries.